

LED Panel light

Standard Version (DLC)

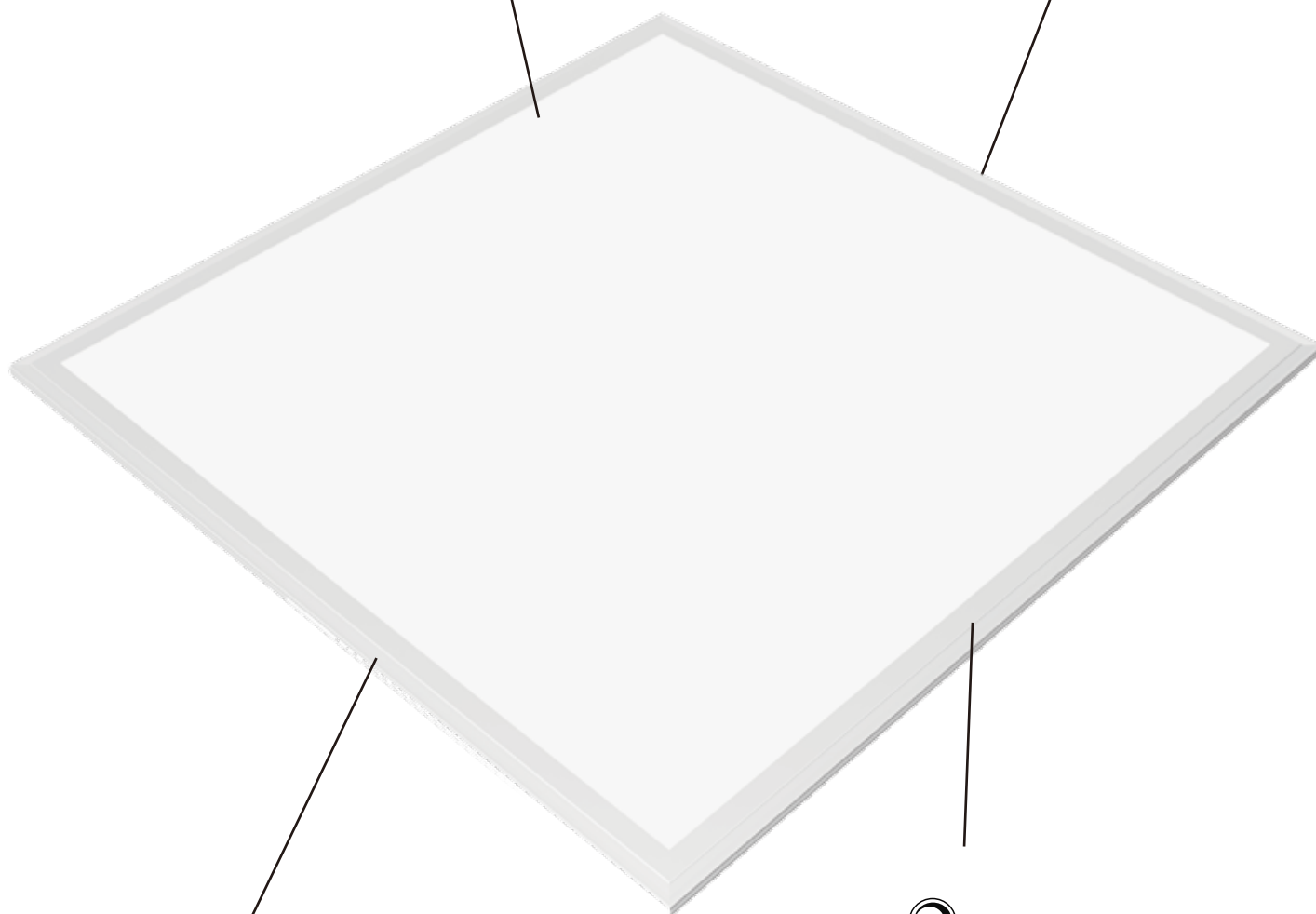
WeledPower

Original
design

VAC
100-277



5 Years
warranty



110
Lm/W

LM-80

CRI
>80

PF
≥0.95

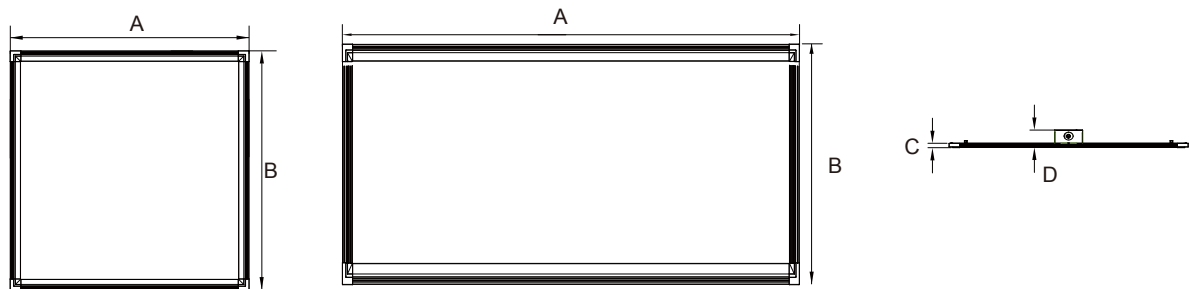


Emergency

Product Features

- 1. Delicately design creates uniform light distribution without hot spots, flicker or glare;
- 2. AL 6063 aluminum frame and good LGP with sophisticated craftsmanship provides magnificent long-lasting light output and elegant appearance;
- 3. 160lm/w LM-80-rated 2835/ 4014 SMD provides high efficacy to the panel light,
- 4. Power supply efficiency >92%, PF>0.95 Isolated power supply.
- 5. Approved by cETL No. 5001965, DLC listed, eligible for rebates;
- 6. Warranty 5 years

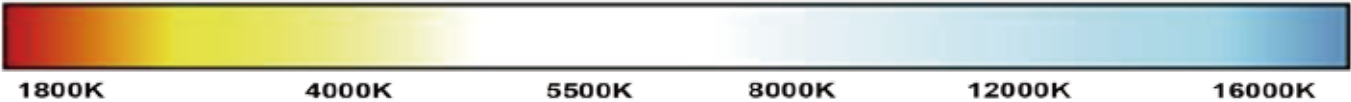
Product Dimension



Size	A (inch)(mm)	B (inch)(mm)	C (inch)(mm)	D (inch)(mm)
2x2 FT	23.74" 603mm	23.74" 603mm	0.35" 9mm	1.69" 43mm
1x4 FT	47.76" 1213mm	11.81" 300mm	0.35" 9mm	1.69" 43mm
2x4 FT	47.76" 1213mm	23.74" 603mm	0.35" 9mm	1.69" 43mm

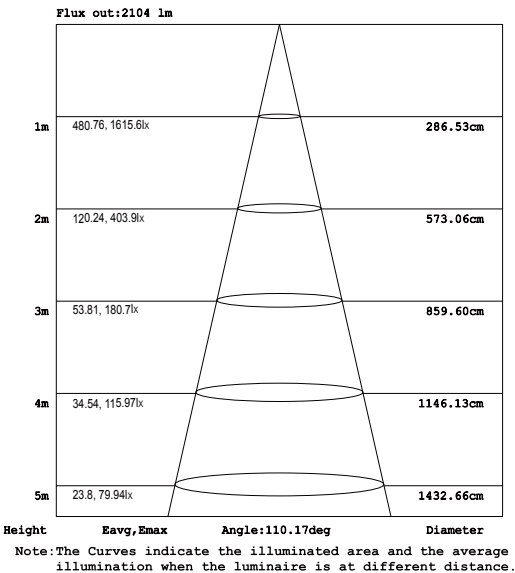
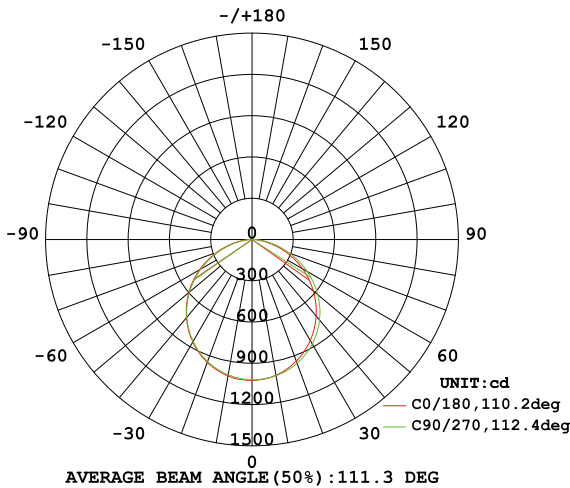
Specification

Size	Power	Input Voltage	Dimmable	Input Current	PF	Light Efficacy	Ra	CCT
2X2	30W	AC100-277V	0-10V	0.3A	>0.95	110lm/w	80	3000-6000K
	40W	AC100-277V	0-10V	0.4A	>0.95	110lm/w	80	3000-6000K
1X4	40W	AC100-277V	0-10V	0.4A	>0.95	110lm/w	80	3000-6000K
2X4	50W	AC100-277V	0-10V	0.5A	>0.95	110lm/w	80	3000-6000K
	72W	AC100-277V	0-10V	0.72A	>0.95	110lm/w	80	3000-6000K

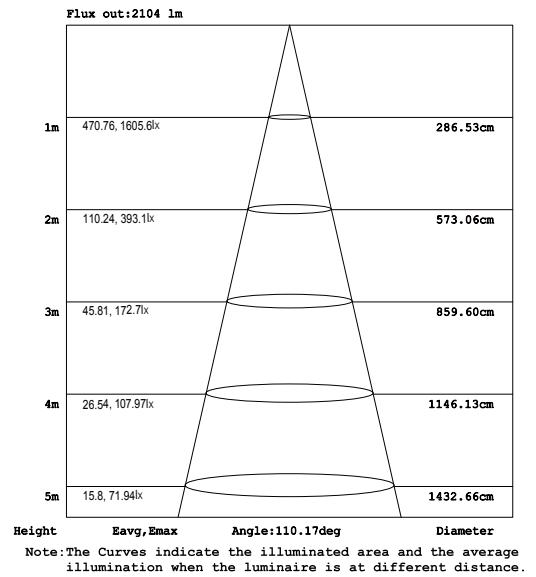
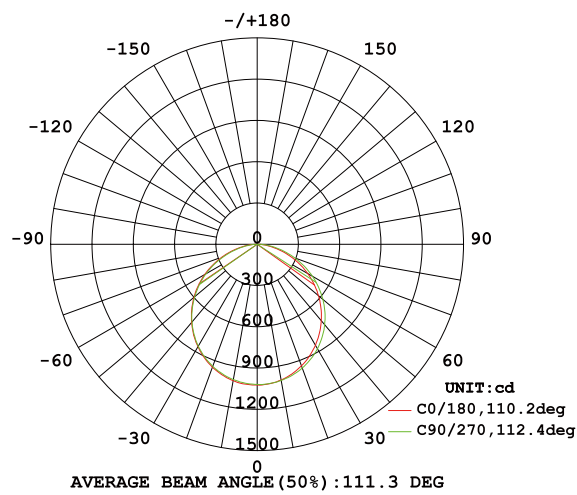


Testing Report

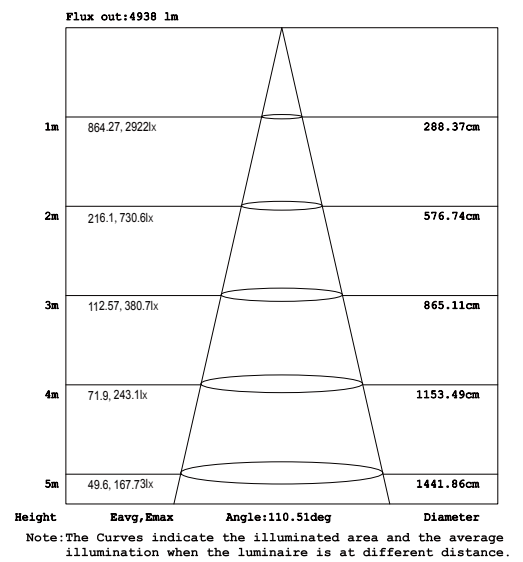
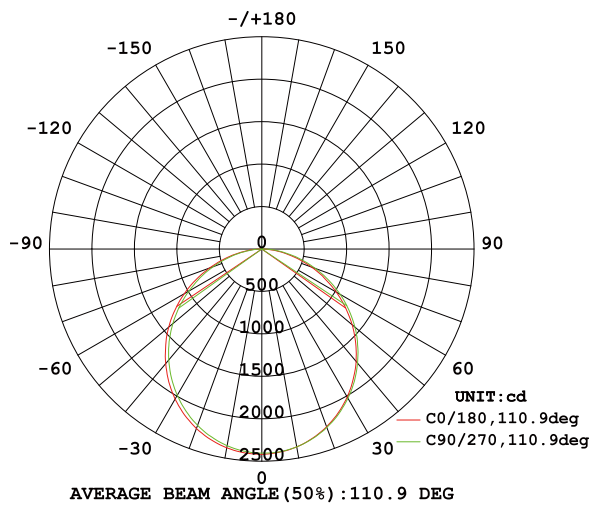
2X2 LUMINOUS INTENSITY DISTRIBUTION DIAGRAM



1X4 LUMINOUS INTENSITY DISTRIBUTION DIAGRAM

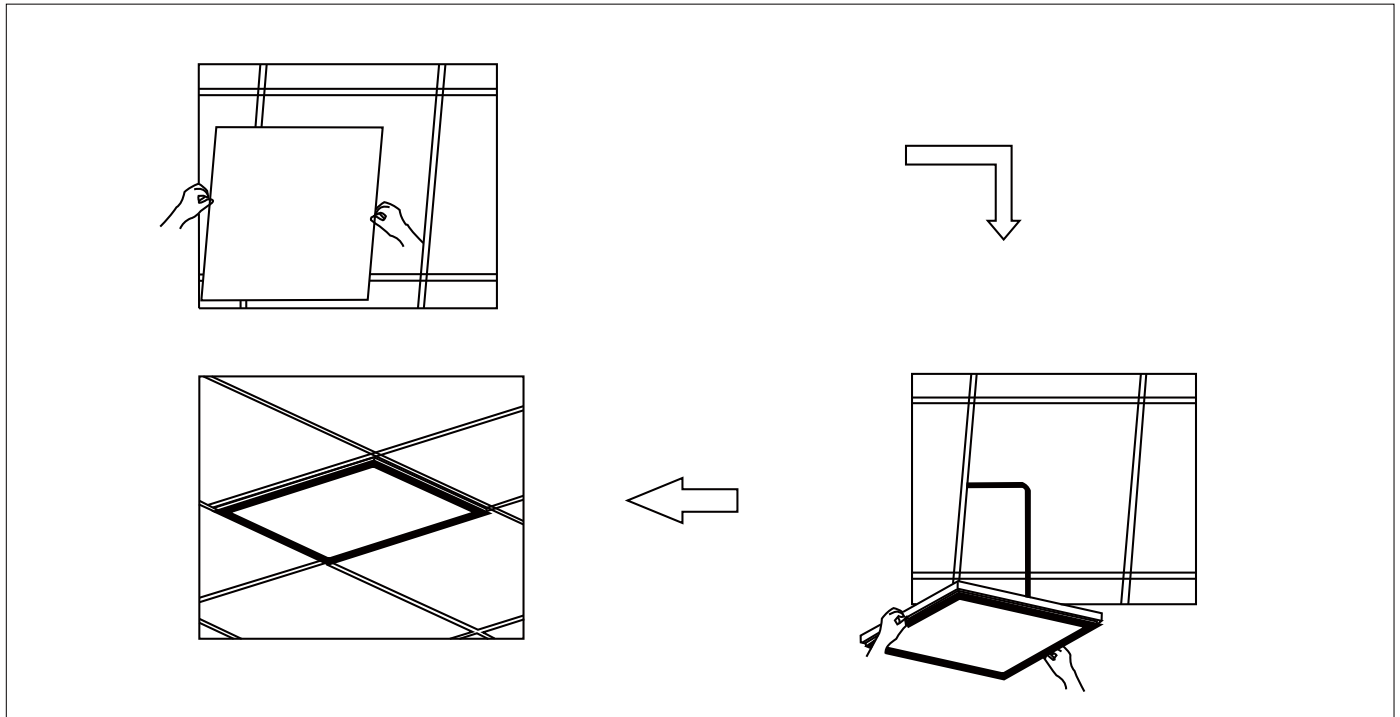


2X4 LUMINOUS INTENSITY DISTRIBUTION DIAGRAM

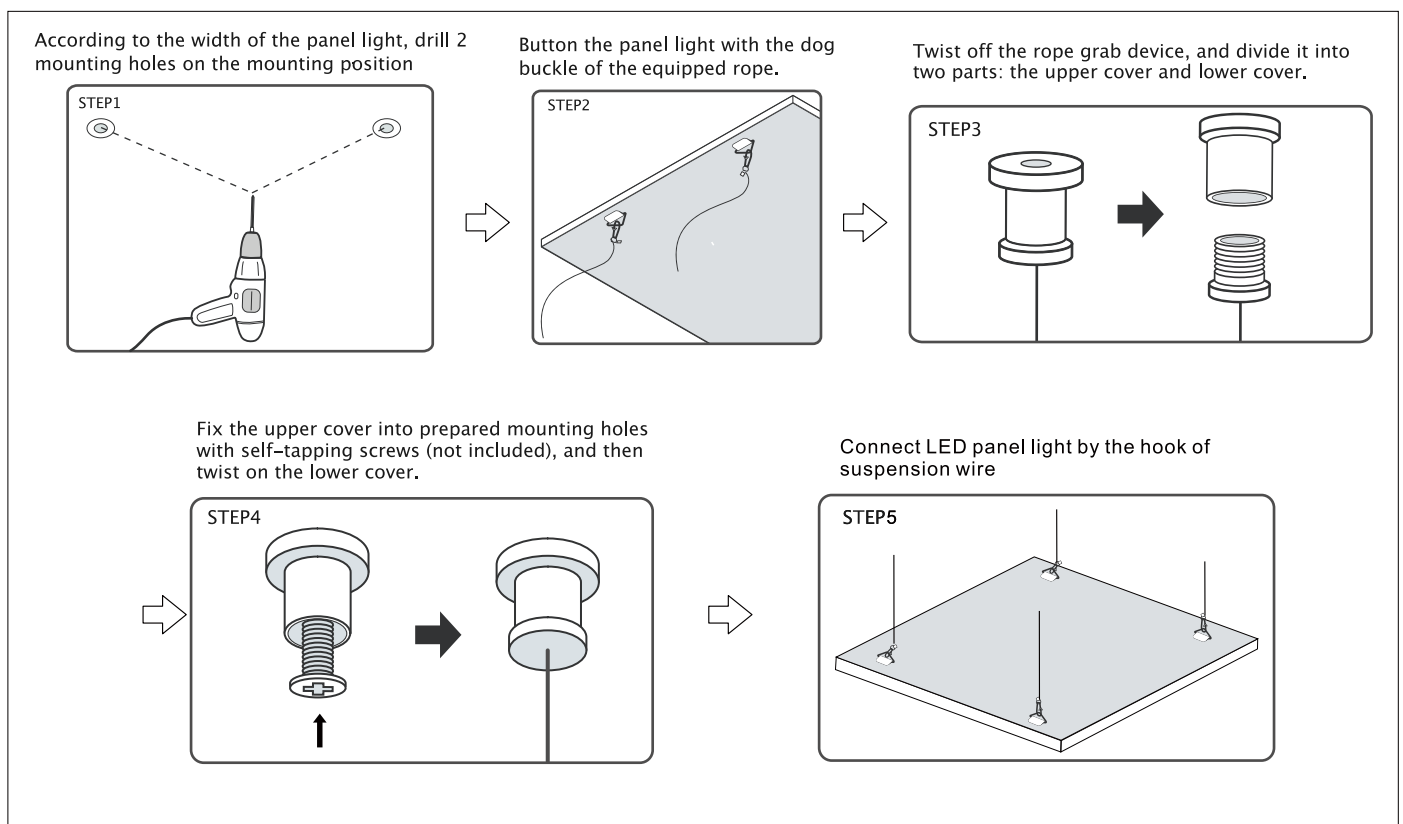


Installation

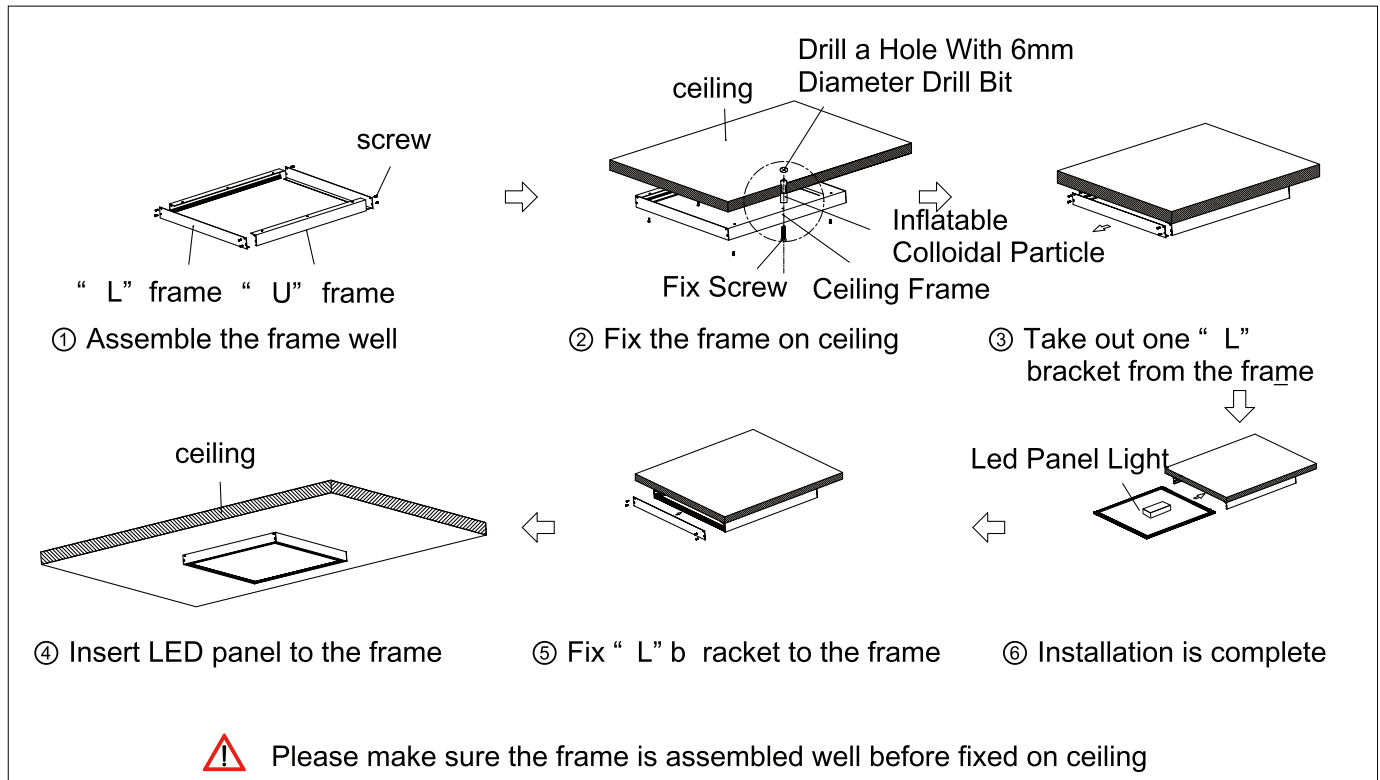
Recessed



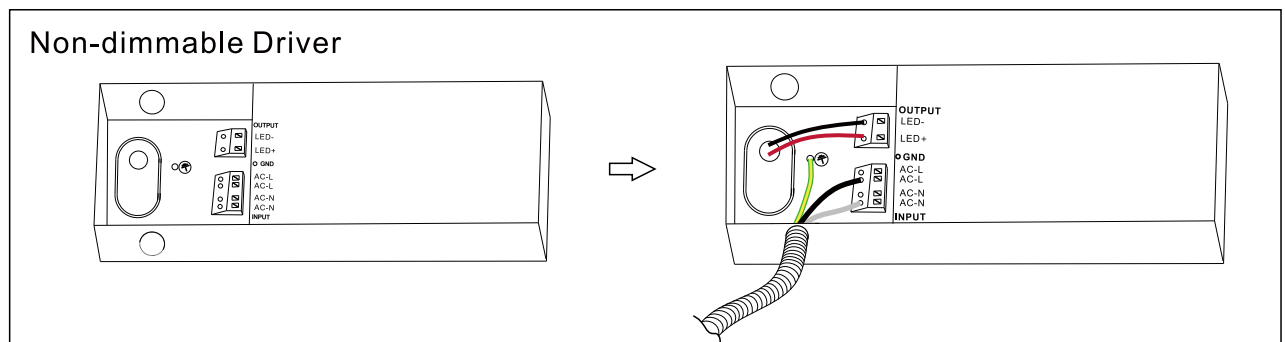
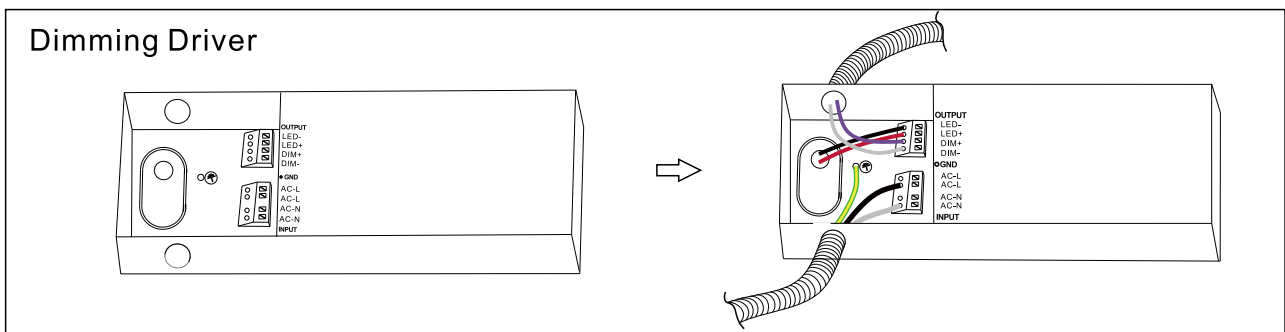
Suspended



Surface Mount



Connection Mode



Emergency LED Driver



RoHS

Specifications:

UL Recognized	Universal Input Voltage
Factory Installation Only (Indoor and Damp)	100-277Vac,50/60Hz
Output Voltage	Operating Ambient Temp Range
30-42Vdc	0°C to +40°C (32°F to 104°F)
Full Warranty	Dimensions
5 Years	11.77"x3.81"x1.41"(299mmx97mmx36mm)
Weigh	
2.75lbs(1.25kg)	

AC Operation:

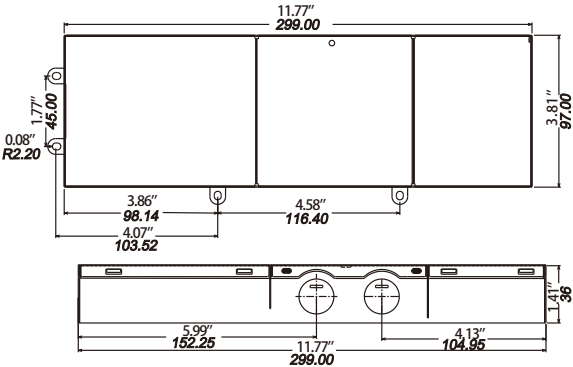
Output Current (Optional)	AC Input Current
800-1750mA	0.9A max.
Maximum Input Power	Power Factor@Max Load
75W max.	>0.90
Surge Protection	Dimming
(Combi-Wave,KV)1.0KV	0-10Vdc,PWM

Emergency Operation:

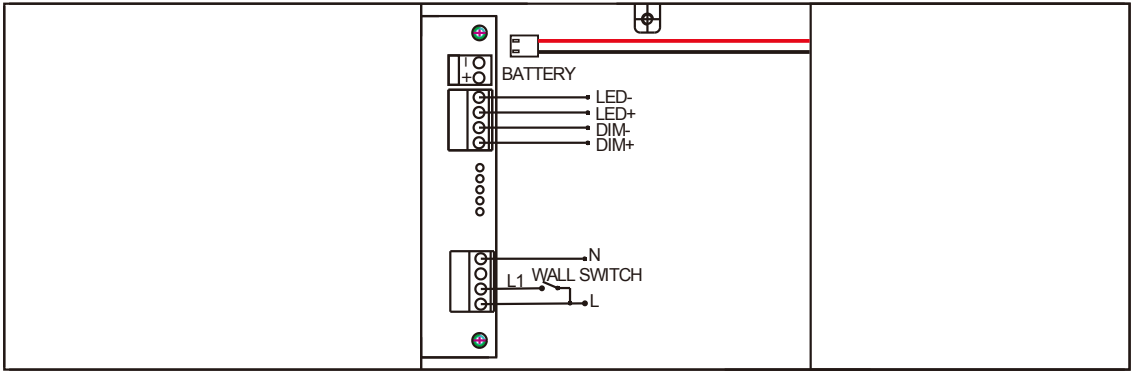
AC Input Current		AC Input Power Rating			
90mA Maximum(Charging Only)		6.0W Maximum(Charging Only)			
Recharge Time		Battery			
≥ 24 Hours		lithium battery			
Battery Charging Current		Output Current t(Optional)			
250mA max.		270-550mA			
IlluminationTime		Test Switch Charging Indicator Light			
90 minutes Emergency		Illuminated Test Switch			
Output Power (Emergency)					
Driver and Emergency Correspond Form					
AC Input Power	30W	40W	50W	60W	75W
Emergency Power	10Wmax.	12Wmax.	15Wmax.	18Wmax.	20Wmax.

Dimensions:

Case-11.77"x3.81"x1.41" (299mmx97mmx36mm)



Wiring Diagram:

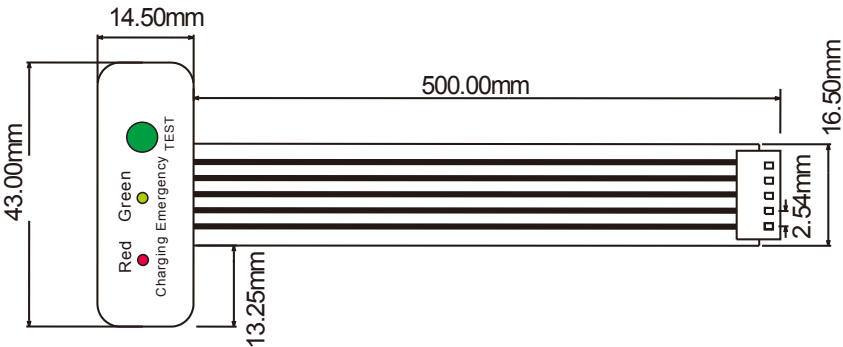


NOTE:WALL SWITCH:Control switch light.

- 1.The power supply cannot insert the battery packet into the mainboard connector before installation; It has been installed to allow the battery package to be inserted into the mainboard connector before the AC voltage is completed.
- 2.Test accessory leads-observe proper polarity wiring.

Display Status:

Operating Condition	Red	Green
Charging	ON	OFF
Emergency	OFF	ON



Packing /weight

Size	Outer Carton Size (LxWxH)	Qty/Carton (pcs)	Net weight (kg)(lbs)	Gross weight (kg)(lbs)	20GP (QTY)	40GP (QTY)
2x2FT	(650*650*653mm) (25.59"x11.41"x25.71")	6pcs	3.5kg 7.72lbs	23.5kg 52.47lbs	1440	3360
1X4FT	(1260*176*350mm) (49.61"x6.93"x13.78")	4pcs	3.4kg 7.50lbs	15.0kg 33.07lbs	1300	3160
2X4FT	(1260*176*653mm) (49.61"x6.93"x25.71")	4pcs	6.7kg 14.77lbs	29.0kg 63.93lbs	640	1728

Packing

